



NESPRESSO[®]

DESCALING
GUIDE





IMPORTANT INFORMATION BEFORE YOU BEGIN

Nespresso recommends descaling every 3 months or 300 capsules (whichever comes first).

Nespresso machines should be descaled with a *Nespresso* Descaling Kit which contains a natural solution that thoroughly dissolves the scale build up. Other solutions (such as vinegar or store-bought descalers) may cause damage to your *Nespresso* machine.

Descaling solution can damage or discolor surfaces so we suggest placing something underneath your machine in case a spill should occur. If a spill does occur, please make sure to clean up the solution immediately to avoid any damage.

Keep descaling solution out of reach of children.

In case of contact with eyes, rinse immediately with plenty of water for 15 minutes and seek medical advice.

Do not swallow or ingest the descaling solution.

The descaling solution may be irritating to the eyes and skin.

Avoid filling up the water tank during the descaling process.

After descaling, wipe down the machine with a damp cloth.



GRAN MAESTRIA



Duration: 30 minutes

STEP 1



Turn the machine off, set the Espresso dial to 4 and the Lungo dial to 1.

STEP 2



Lift the coffee lever to make sure there is no capsule inside the machine. Close the lever.

STEP 3



Remove the cup shelf by turning it to the vertical position and then pulling forward.

STEP 4



Empty the drip tray and capsule container and place them back onto the machine.

STEP 5



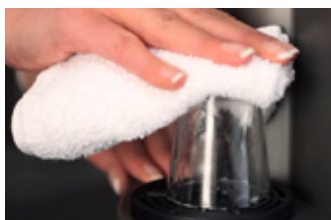
Enter descaling mode by pressing and holding the Espresso button while turning on the machine. The middle light will be orange.

STEP 6



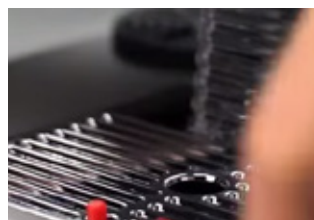
Fill the water tank with **2 packets** of descaling solution and the rest with water.

STEP 7



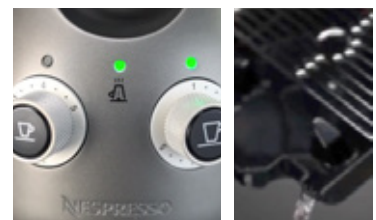
Place an Espresso cup upside down on the cup heater and press down. The water will flow into the drip tray. The cup will get hot so use a towel to protect your hand.

STEP 8



Once the drip tray is close to full (the red floater will indicate the water level), empty it, replace it and continue to press down on the cup.

STEP 9



When the middle and right light become steady, lift the cup, empty the drip tray and place it back onto the machine.

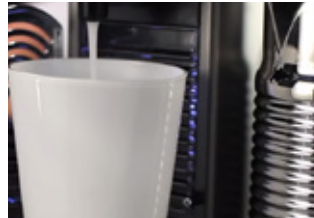


STEP 10



Place a sufficiently sized receptacle under the coffee outlet. Press and release the Lungo button to start descaling. The right light will blink.

STEP 11



A mix of start and stop operations will occur. Do not interrupt the machine.

STEP 12



When the right light stops blinking and the left begins to blink, the descaling cycle is done. Discard the descaling solution.

STEP 13



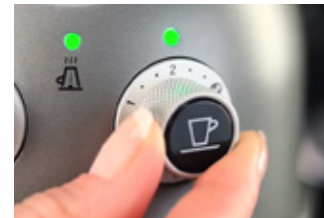
Empty and rinse the drip tray and capsule container and place them back onto the machine.

STEP 14



Rinse the water tank, fill with fresh water and place them back onto the machine.

STEP 15



Turn the Lungo dial to position 2.

STEP 16

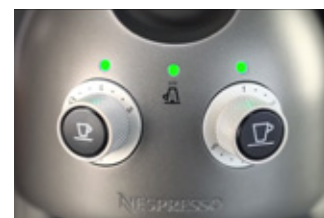
Repeat **steps 7, 8 and 9** to rinse the cup heater outlet.

STEP 17



Place the receptacle back under the coffee outlet. Press and release the Lungo button to start rinsing the coffee outlet.

STEP 18



When all three lights are steady, the cycle is complete.



STEP 19



Discard the rinsing water.

STEP 20



Empty and rinse the water tank, drip tray and capsule container and place them back onto the machine.

STEP 21



Reinsert the cup shelf. Let the machine rest for 10 minutes. The machine is now ready to use.