



NESPRESSO®

DESCALING
GUIDE





IMPORTANT INFORMATION BEFORE YOU BEGIN

Nespresso recommends descaling every 3 months or 300 capsules (whichever comes first).

Nespresso machines should be descaled with a *Nespresso* Descaling Kit which contains a natural solution that thoroughly dissolves the scale build up. Other solutions (such as vinegar or store-bought descalers) may cause damage to your *Nespresso* machine.

Descaling solution can damage or discolor surfaces so we suggest placing something underneath your machine in case a spill should occur. If a spill does occur, please make sure to clean up the solution immediately to avoid any damage.

Keep descaling solution out of reach of children.

In case of contact with eyes, rinse immediately with plenty of water for 15 minutes and seek medical advice.

Do not swallow or ingest the descaling solution.

The descaling solution may be irritating to the eyes and skin.

Avoid filling up the water tank during the descaling process.

After descaling, wipe down the machine with a damp cloth.

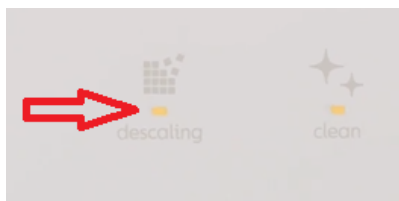


GRAN LATTISSIMA



Duration: 20-25 minutes
Requires 1 packet of solution

STEP 1



When the descaling indicator light shines orange, it is time to descale.

STEP 2



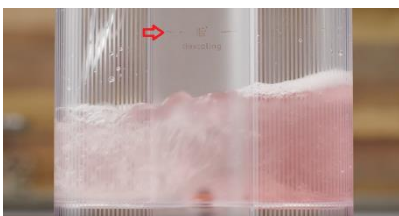
Eject the capsule. Close the lever.

STEP 3



Empty the drip tray, capsule container, cup support and drop collector and then reinsert. The cup support can be removed during the descaling process.

STEP 4



Add 1 packet of *Nespresso* descaling solution to the water tank, then fill with water to the descaling mark on the tank.

STEP 5



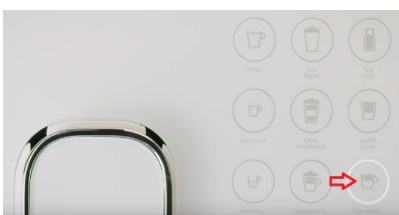
Remove the descaling pipe from the back of the machine and plug it into the steam connector on the front of the machine. Machine must be ON when doing this.

STEP 6



Once the pipe is pressed in firmly, the descaling indicator light should blink and will continue to blink during descaling. Replace the water tank on the machine.

STEP 7



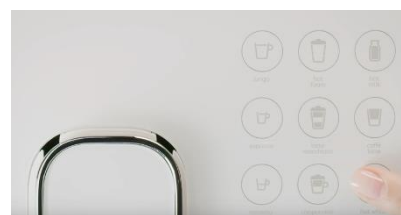
The Flat White button will blink white.

STEP 8



Place a receptacle underneath the coffee outlet and descaling pipe.

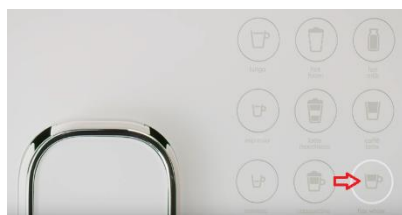
STEP 9



Press and release the Flat White button and descaling solution will begin to flow alternately from the coffee outlet, descaling pipe and drip tray outlets.



STEP 10



The Flat White button will shine white when the descaling solution is done running through and the water tank is empty.

STEP 11



Discard the descaling solution, rinse and wash the water tank thoroughly and refill the tank to MAX line with fresh water before placing back onto the machine.

STEP 12



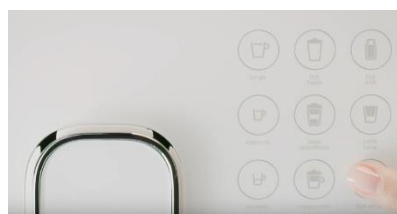
Empty the drip tray, capsule container, cup support, and drop collector and reinsert.

STEP 13



Place the empty receptacle under the coffee outlet.

STEP 14



Press and release the Flat White button and rinsing will alternate between the coffee outlet, descaling pipe, and drip tray outlets.

STEP 15



The machine will automatically power off once the rinsing is complete. Discard the rinsing water.

STEP 16



Empty the drip tray, capsule container, cup support, and drop collector and reinsert.

STEP 17



Remove the descaling pipe with caution as it does become hot. Rinse it and replace in the storage compartment in the back of the machine.

STEP 18



Refill the water tank and place it on the machine. Wipe down the machine with a damp cloth. Let the machine rest for 10 minutes before using.