



NESPRESSO®

DESCALING
GUIDE





IMPORTANT INFORMATION BEFORE YOU BEGIN

Nespresso recommends descaling every 3 months or 300 capsules (whichever comes first).

Nespresso machines should be descaled with a *Nespresso* Descaling Kit which contains a natural solution that thoroughly dissolves the scale build up. Other solutions (such as vinegar or store-bought descalers) may cause damage to your *Nespresso* machine.

Descaling solution can damage or discolor surfaces so we suggest placing something underneath your machine in case a spill should occur. If a spill does occur, please make sure to clean up the solution immediately to avoid any damage.

Keep descaling solution out of reach of children.

In case of contact with eyes, rinse immediately with plenty of water for 15 minutes and seek medical advice.

Do not swallow or ingest the descaling solution.

The descaling solution may be irritating to the eyes and skin.

Avoid filling up the water tank during the descaling process.

After descaling, wipe down the machine with a damp cloth.



CITIZ



Duration: 15-20 minutes

STEP 1



Original Citiz: turn the machine on and wait until the cup buttons are steady.



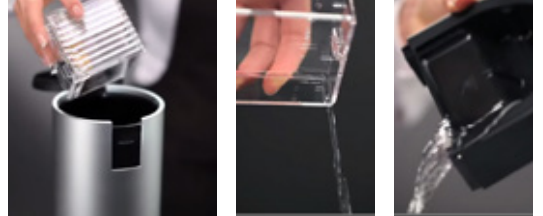
Citiz Refresh: turn the machine on by pressing either cup button.

STEP 2



Eject the capsule. Close the lever.

STEP 3



Empty the capsule container, water tray and drip tray and then reinsert.

STEP 4



Place a receptacle under the coffee outlet.

STEP 5



Fill the water tank halfway full with water and pour in **1 packet** of descaling solution.

STEP 6



Simultaneously press and hold both cup buttons for 3 seconds. The cup buttons will blink quickly and simultaneously.

STEP 7



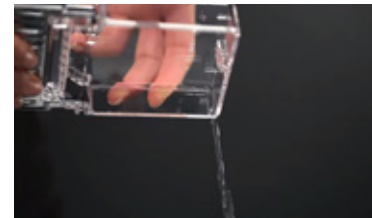
Press and release the large cup button and allow all of the solution to pass through the coffee outlet.

STEP 8



Refill the water tank with the used solution.

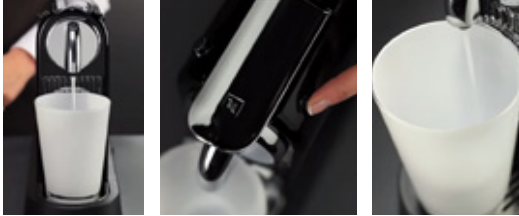
STEP 9



Empty the water tray and reinsert.



STEP 10



Place the empty receptacle under the coffee outlet. Press and release the large cup button again to repeat the process.

STEP 11



Discard the solution and rinse the water tank thoroughly before refilling the tank to the top with fresh water and placing it back onto the machine.

STEP 12



Empty the water tray and reinsert.

STEP 13



Place the empty receptacle under the coffee outlet. Press and release the large cup button to allow the entire tank of water to pass through the coffee outlet.

STEP 14



Simultaneously press and hold both cup buttons for 3-5 seconds to exit descaling mode. The lights will become steady or slow down and then become steady.

STEP 15



Empty and rinse the capsule container, water tray and drip tray before reassembly.

STEP 16



Refill the water tank and place it onto the machine.

STEP 17



Wipe down the machine with a damp cloth. Let the machine rest for 10 minutes. The machine is now ready for use.