

NEW TECHNOLOGY NOW AVAILABLE  
**TOUCHLESS, REMOTE BREWING ON THE  
NESPRESSO MOMENTO RANGE**

Through new innovations in the **Nespresso** Momento range, your team can enjoy their favorite coffee without ever touching the coffee machine. The entire brewing process can be done remotely, providing a more hygienic and personalized coffee experience.

**HOW IT WORKS:**



**START**

User selects and inserts capsule.

**STEP 1**

User scans the QR code and is directed to a webpage.

**STEP 2**

The mobile shows the **Nespresso** Momento screen.

**STEP 3**

User selects the recipe.

**STEP 4**

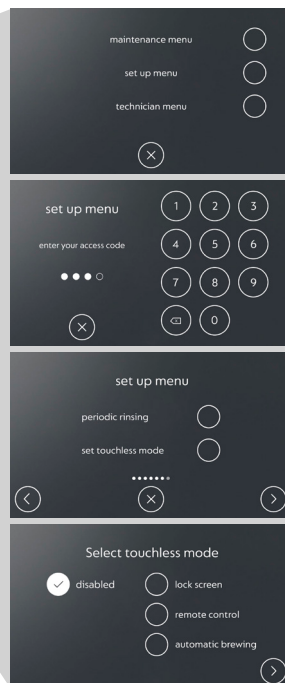
User confirms the selection.

**STEP 5**

The recipe selected is sent to the machine via the modem.

**ENJOY!**

**REMOTE BREWING WILL AUTOMATICALLY ACTIVATE ON OCTOBER 19TH SHOULD YOU CHOOSE TO DISABLE:**



Go to the settings menu on your machine and select "setup menu" from the list of options.

Enter your access code "8888" on the touch screen.

From the setup menu, select "set touchless mode" on the screen.

From the touchless mode menu, select "disabled" from the list of touchless mode options.