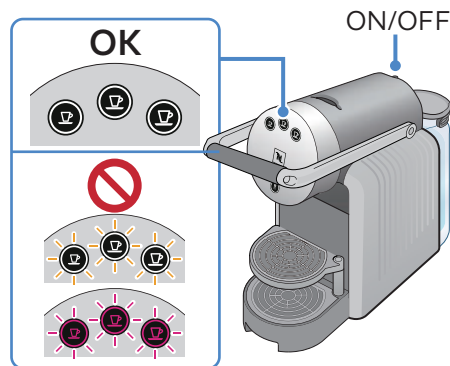


How to Use a Nespresso Machine

Official site:
www.nespresso.com/pro


Step 1 Checking

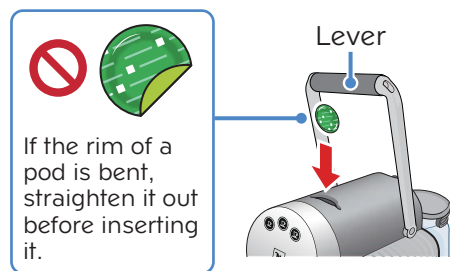
- ▼ Press the power button to turn the machine on.
- ▼ If they are blinking, the machine is still warming up. Wait until the buttons stop blinking and remain lit. If they are blinking red, fill the water tank with water.



Step 2 Inserting a pod


- ▼ Open the lever and insert a Nespresso pod into the pod insertion slot.
- ▼ Close the lever to the horizontal position.

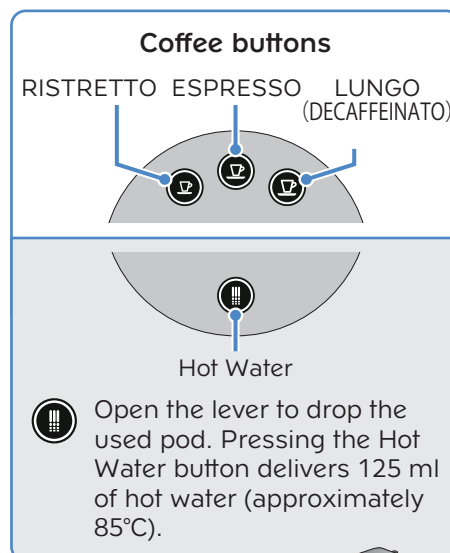
 When you open or close the lever, move it fully until it stops. Otherwise, the pod may fall down.



Step 3 Extracting coffee

- ▼ Place a cup under the coffee outlet. Press the desired coffee button. The machine automatically starts extracting coffee and automatically stops once the preset volume has been served.
- ▼ When extraction is finished, the button stops blinking and remains lit. Remove the cup from the cup support.

 The lever is locked while the button is blinking. Do not open the lever forcefully. Doing so may lead to personal injury or cause the machine to malfunction.



Step 4 Ejecting the used pod

- ▼ Open the lever to eject the used pod into the machine.
- ▼ Close the lever to the horizontal position.
- ▼ If you are unable to close the lever as far as it can go, pull out the pod container.

