



Vertuo Creatista

BVE850

-
- EN User Manual
 - FR Manuel d'instructions
 - ES Manual de usuario







CONTENTS

PACKAGING CONTENT	2	MILK COFFEE PREPARATION	10	EMPTYING THE SYSTEM	21
SPECIFICATIONS	2	MILK COFFEE RECIPES	13	TROUBLESHOOTING	23
MACHINE OVERVIEW	3	DAILY CLEANING	14	ERRORS / BLINKING SUMMARY	26
CONNECTIVITY	4	CLEANING THE COFFEE SYSTEM	14	ENERGY SAVING CONCEPT	27
MACHINE SET UP	5	CLEANING THE STEAM WAND	16	CONTACT NESPRESSO	27
SETTING THE WATER HARDNESS	6	DESCALING	17	DISPOSAL AND ENVIRONMENTAL PROTECTION	27
FIRST USE / RINSE CYCLE	7	RESET TO FACTORY SETTINGS	20		
COFFEE PREPARATION	8	TURN THE BLUETOOTH® / WI-FI® ON-OFF	20		

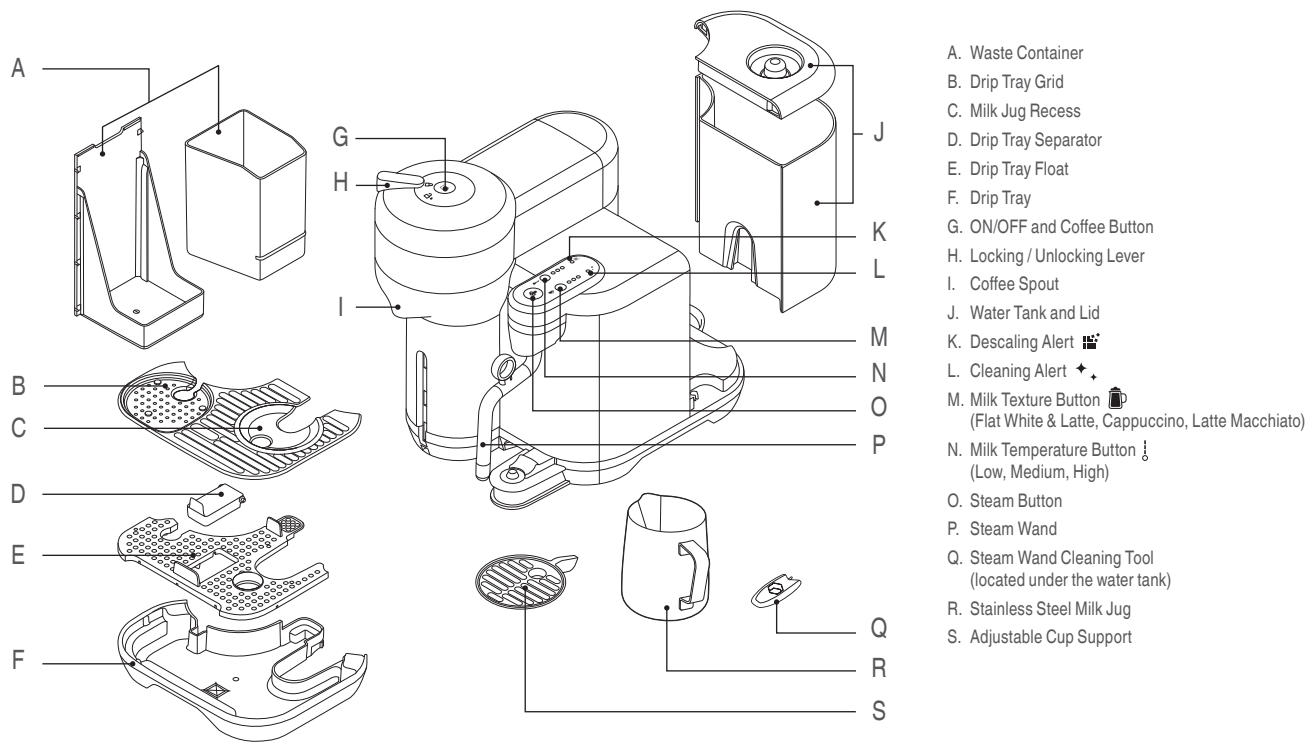
PACKAGING CONTENT

- Vertuo Creatista Coffee Machine
- Tasting Box of Nespresso Vertuo Capsules
- Vertuo Creatista Recipe Milk Jug
- Nespresso Welcome Brochure
- Quick Start Guide
- Safety Booklet
- Warranty Booklet
- Water Hardness Test Strip

SPECIFICATIONS

	USA / CA: 120 V	60 Hz	1500 W
	MX: 127 V	60Hz	1 380 W
Frequency	2402 - 2480 GHz		Max Transmit Power 4dBm
Standby	0.39 W/h		
	23 cm / 9.05 in		
	33 cm / 12.9 in		
	42 cm / 16.5 in		
	8.7 kg / 19.2 lbs		
	2 L / 67.6 fl.oz		

MACHINE OVERVIEW



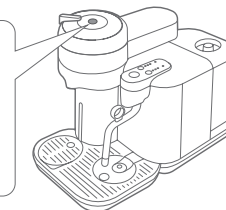
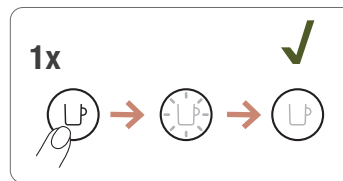
CONNECTIVITY

GET THE APP

1



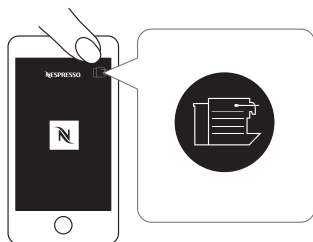
2



* App Store is a trademark of Apple inc., registered in the U.S. and other countries.

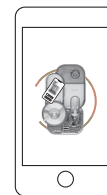
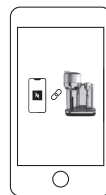
** Google Play and the Google Play logo are trademarks of Google LLC.

3






Launch the Nespresso app. Select the machine icon. Follow the instructions via the app.

4

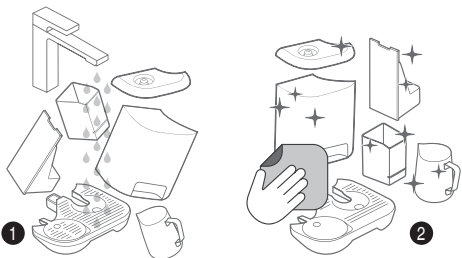


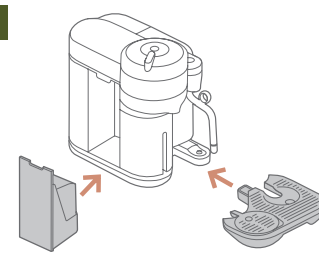
By default, the Bluetooth® / Wi-Fi® is switched on. Factory reset will also switch the Bluetooth® / Wi-Fi® on.

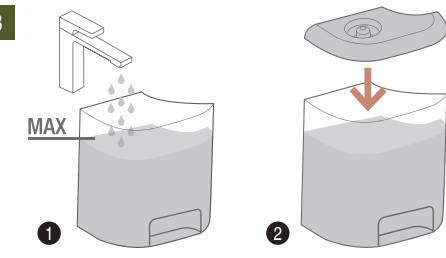
Benefits of connecting your machine:

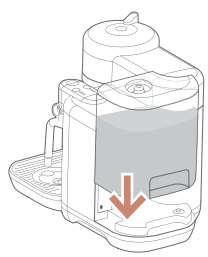
-  **Smart Coffee:** Enjoy the latest coffee innovations from Nespresso by always keeping your machine up to date.
-  **Expert advice:** Receive real-time tips thanks to step-by-step features such as descaling, rinsing and cleaning your machine.
-  **Machine Care:** Get support and tutorials for your machine care via your smartphone.

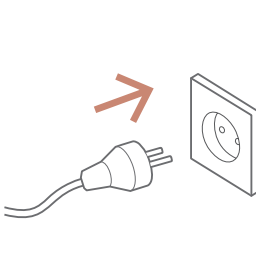
MACHINE SET UP

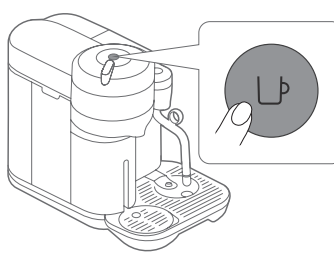
1  Rinse and dry all removable parts.

2  Reassemble the machine.

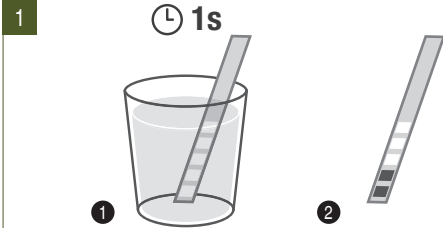
3  Fill the water tank with fresh potable water.

4  Properly attach water tank to the machine.

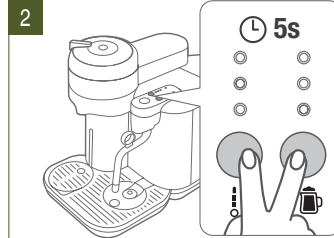
5  Plug in the power cord and turn on the machine.

6  Single press coffee button.

EN SETTING THE WATER HARDNESS



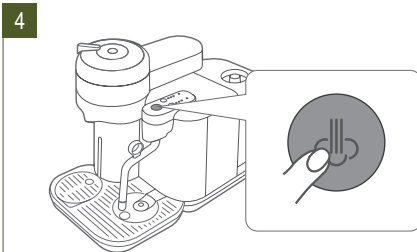
Dip the water hardness strip briefly (1 second) in a container of potable water. Shake off excess water and compare results after 1 min.



Press and hold the Milk Temperature and Milk Froth buttons for 5 seconds.



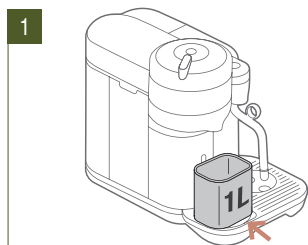
Set the hardness according to the result of the testing strip. Use the Milk Texture button and Milk Temperature button to change the level.



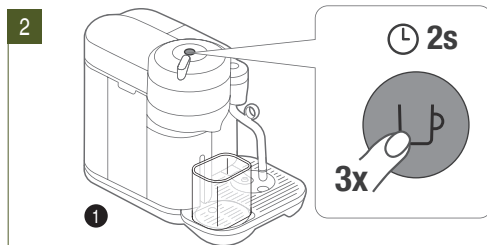
Press the Steam Button to save and exit.

FIRST USE / RINSE CYCLE

⚠ **WARNING:** Make sure no capsule is inserted into the machine during the rinsing process.



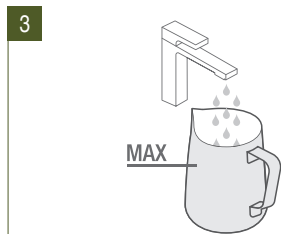
Place the 1 L container on top of the drip tray.



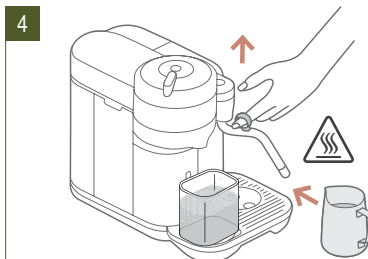
Press the coffee button three times within 2 seconds.



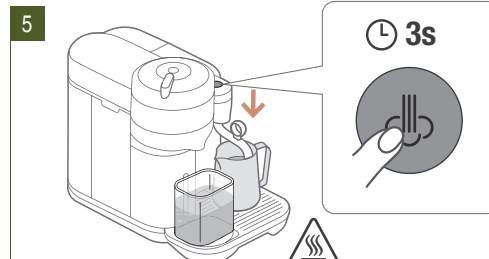
This process will take up to 7 minutes but can be stopped at any time by pushing the coffee button.



Fill the milk jug with potable water to the MAX line.



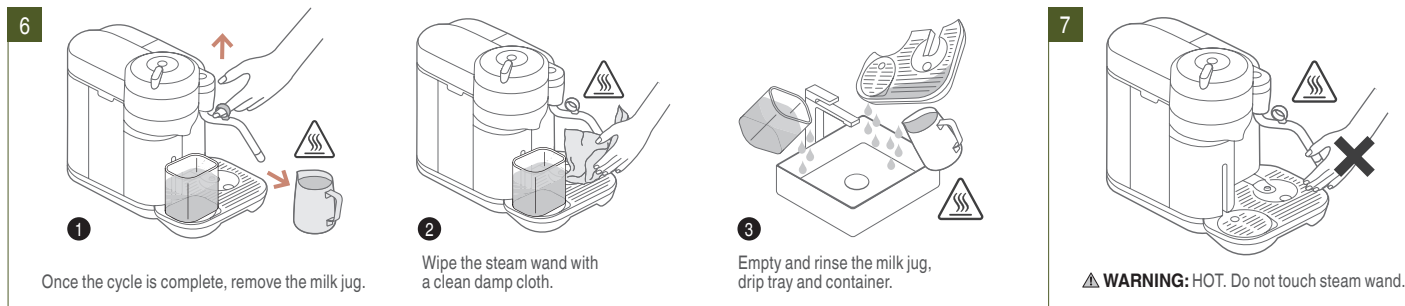
Lift up the steam wand and insert in the milk jug.



Press and hold the Steam Button for 3 seconds.

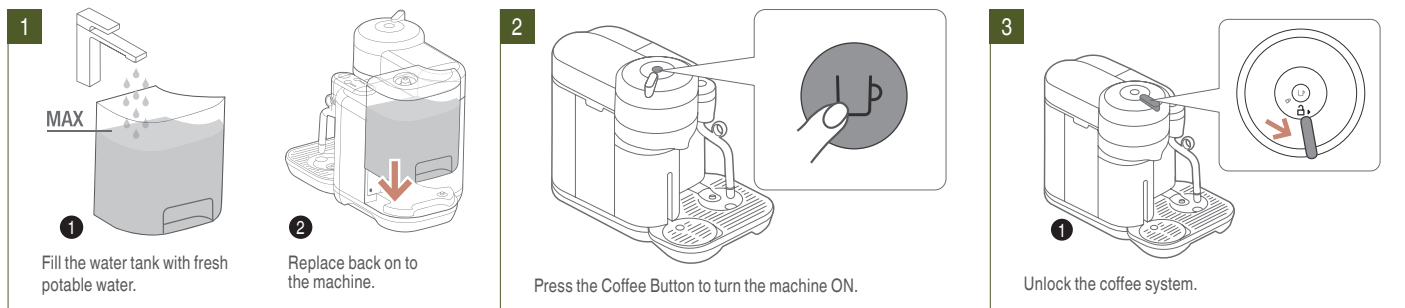
FIRST USE / RINSE CYCLE

⚠ WARNING: Make sure no capsule is inserted into the machine during the rinsing process.



ⓘ NOTE: Do not put any parts except the steam wand tip in the dishwasher.

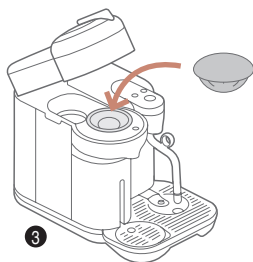
COFFEE PREPARATION



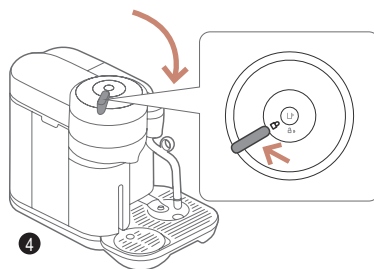
COFFEE PREPARATION



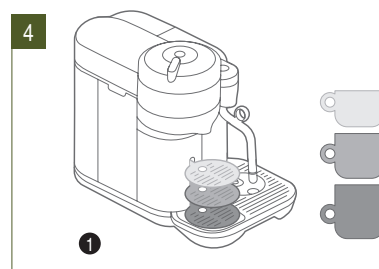
2 Open the coffee system.



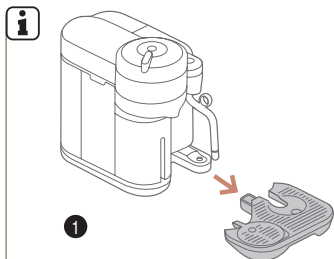
3 Insert a coffee capsule.



4 Close and lock the coffee system.



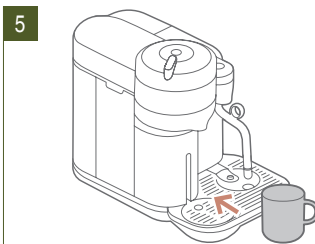
1 Adjust the height position of the cup support.



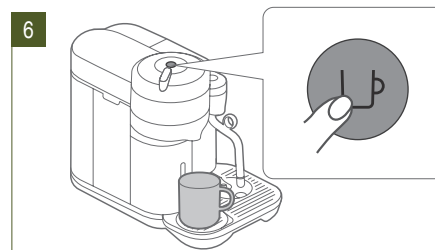
1 Remove the cup support and drip tray when using a carafe.



2



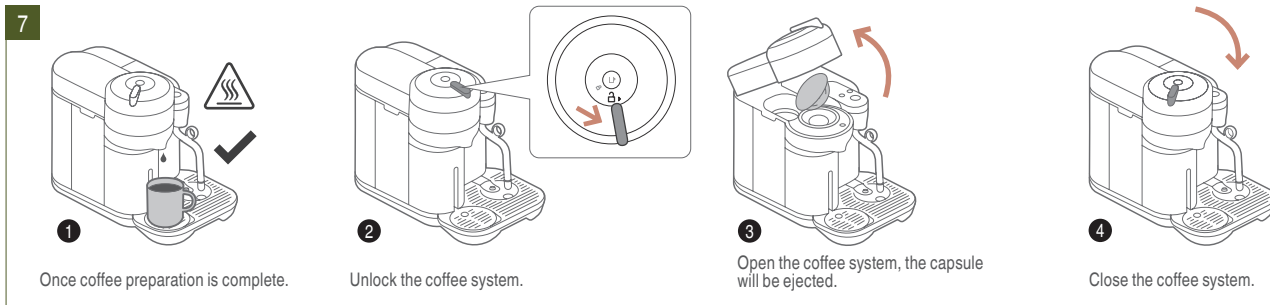
5 Place a cup of sufficient capacity under the coffee spout.



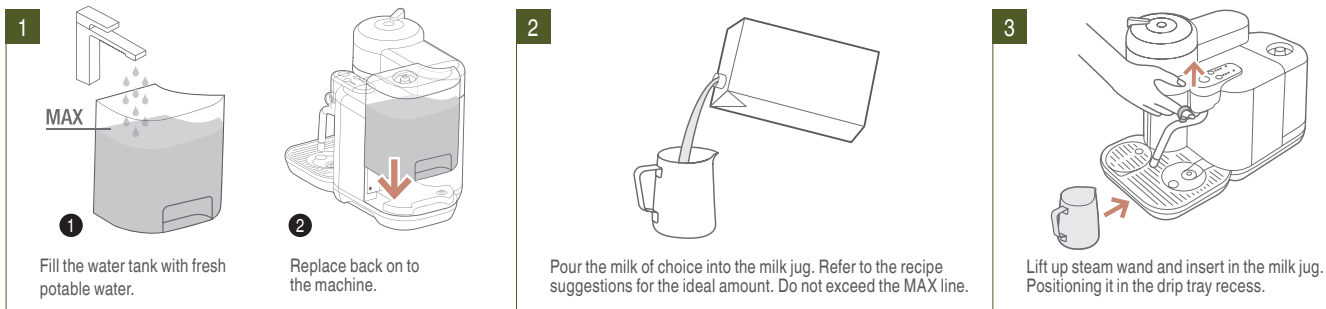
6 Press the coffee button, to stop the coffee flow early, press the coffee button.

⚠ **CAUTION:** Risk of scalding may occur due to hot coffee overflowing.

COFFEE PREPARATION

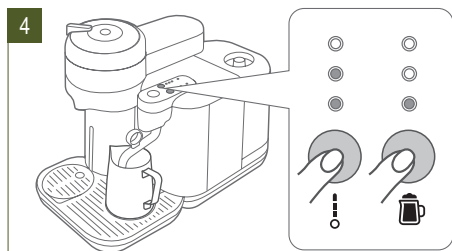


MILK COFFEE PREPARATION

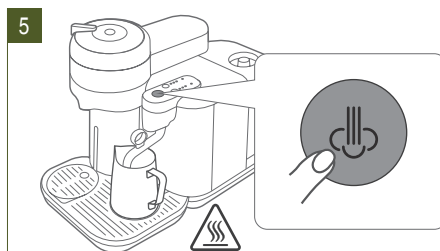


NOTE: For an ideal milk froth, we recommend the use of semi-skimmed pasteurized milk at fridge temperature.

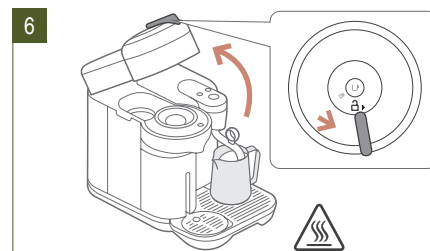
MILK COFFEE PREPARATION



Select Milk Temperature level and Milk Texture level.



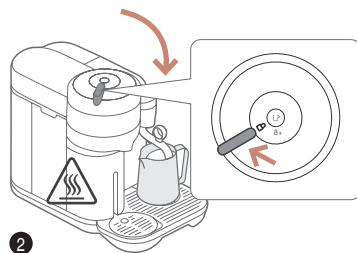
Press the Steam Button to start frothing.



Unlock and open the coffee system.



1 Insert a coffee capsule.



2 Close and lock the coffee system.



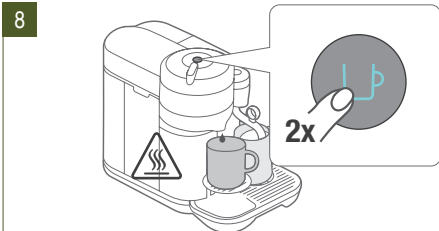
3 Adjust the height position of the cup support.



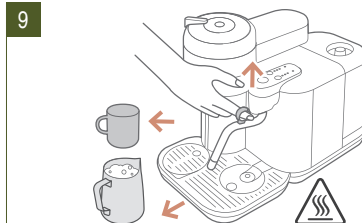
4 Place a cup of sufficient capacity under the coffee outlet.

CAUTION: Risk of scalding may occur due to hot coffee overflowing.

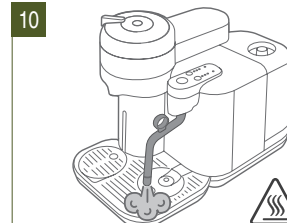
EN MILK COFFEE PREPARATION



Press the Coffee button twice (2x) for a shortened, milk-friendly extraction. To stop the coffee extraction early, press the Coffee button.



Once the coffee extraction and milk texturing are complete, remove the cup and milk jug from the machine.



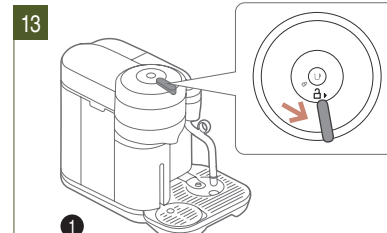
The machine will purge the steam wand once it returns to its downward position.



Wipe the steam wand with a clean, damp cloth.



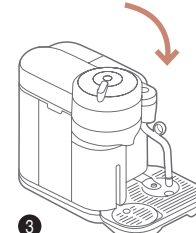
Pour the milk into the coffee.



Unlock the coffee system.



Open the coffee system, the capsule will be ejected.

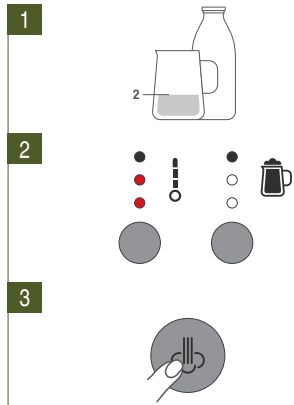


Close the coffee system.

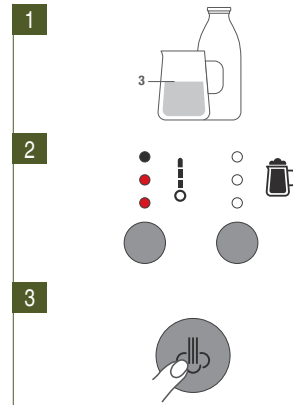
NOTE: When making a latte machiato, pour the textured milk into the glass, then position under coffee spout and press the Coffee button (2x) to start the extraction.

MILK COFFEE RECIPES

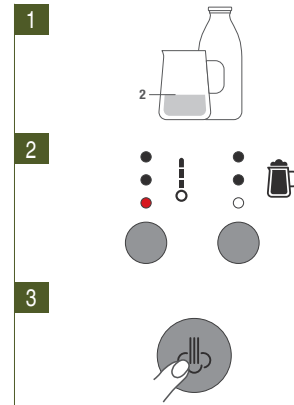
CAPPUCCINO



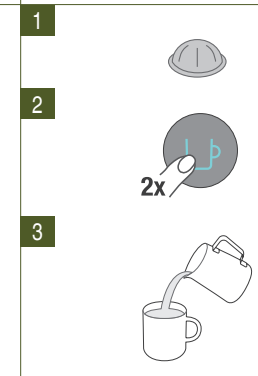
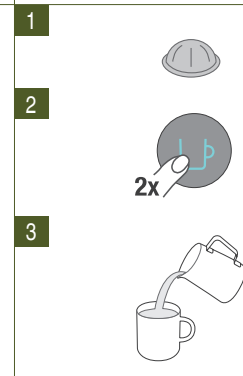
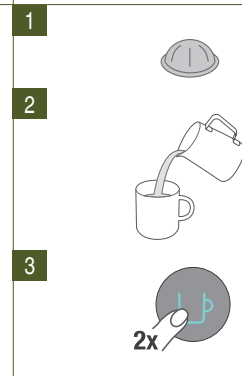
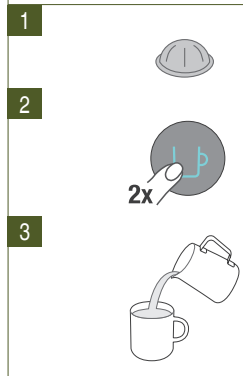
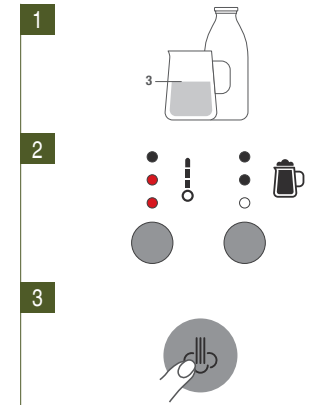
LATTE MACCHIATO



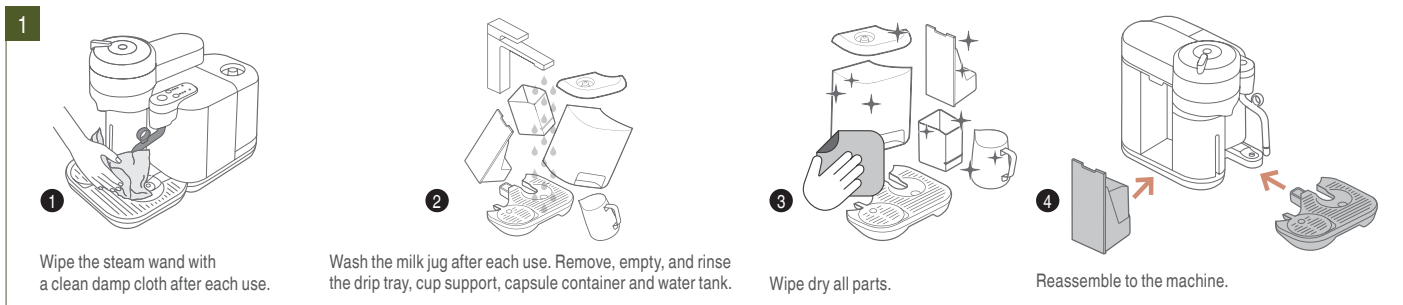
FLAT WHITE



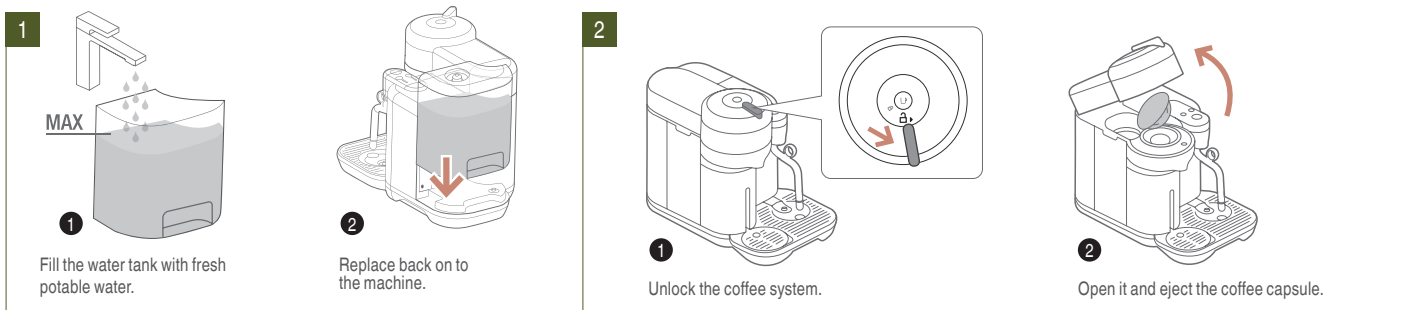
LATTE / CAFÉ LATTE



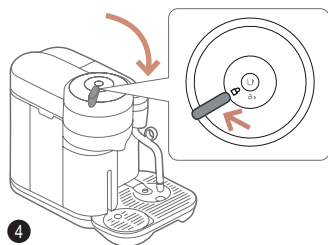
DAILY CLEANING



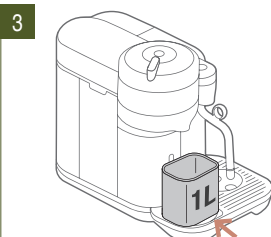
CLEANING THE COFFEE SYSTEM



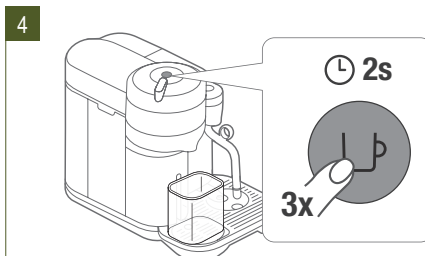
CLEANING THE COFFEE SYSTEM



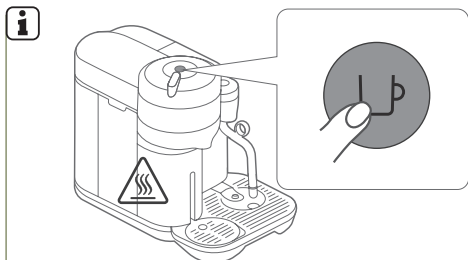
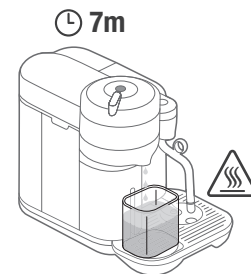
4 Then close and lock the coffee system.



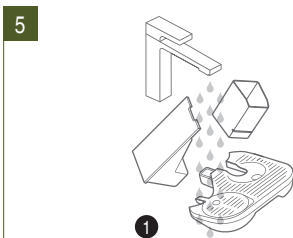
3 Place a 34 fl.oz / 1 L container under the coffee outlet.



4 Press the coffee button 3 times (within 2 seconds).



NOTE: The clean cycle can be interrupted by pressing the coffee button.

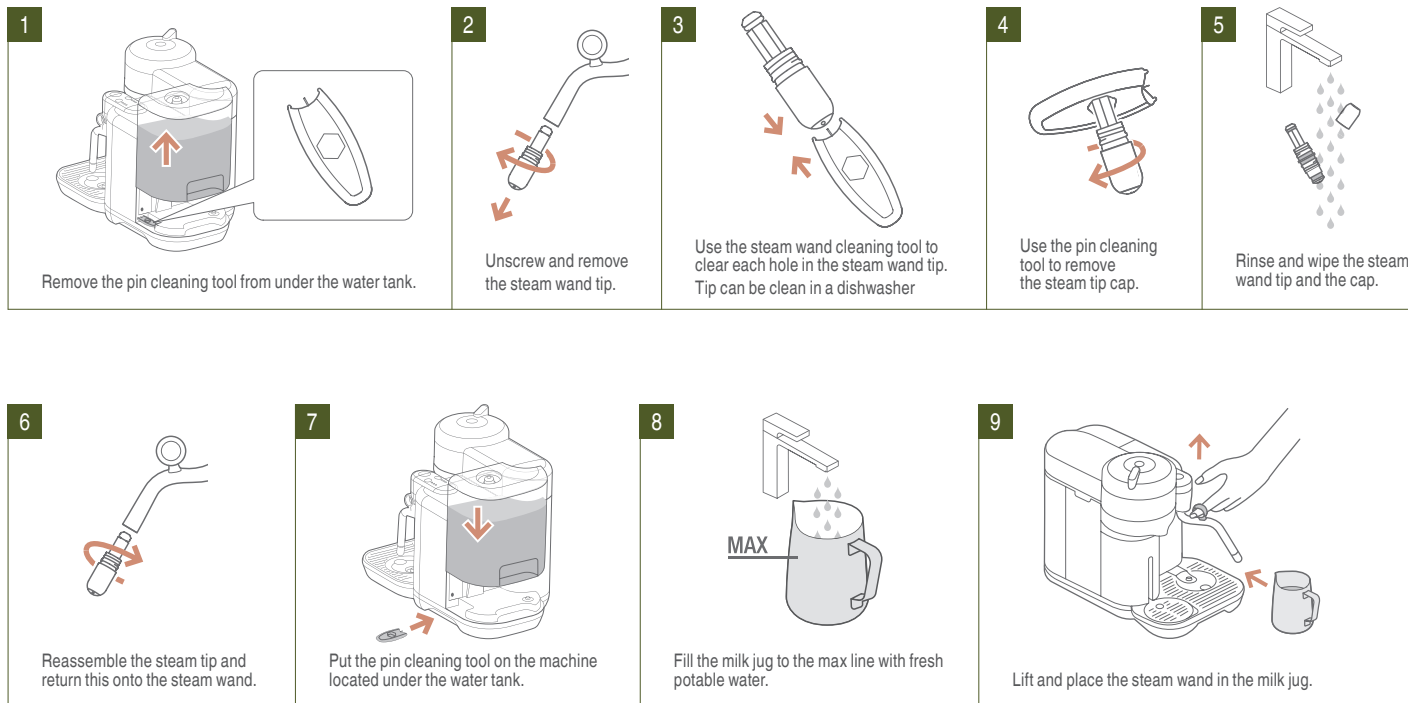


1 Once the process is complete, wash the drip tray and capsule container in warm water with mild detergent.



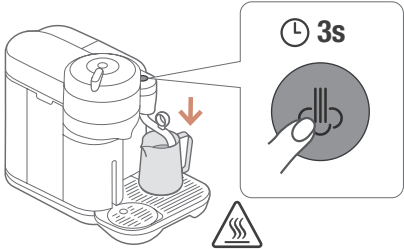
2 Dry with a clean damp cloth.

CLEANING THE STEAM WAND




CLEANING THE STEAM WAND

10



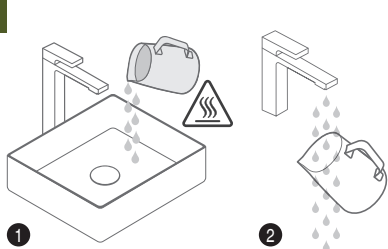
Press and hold the Steam Button for 3 seconds to start the clean cycle.

11



Once complete, lift the steam wand and remove the jug.

12



1 Empty the milk jug.

2 Rinse the milk jug

DESCALING

**WATER HARDNESS
SETTING LEVEL**

**WATER HARDNESS
°fH**

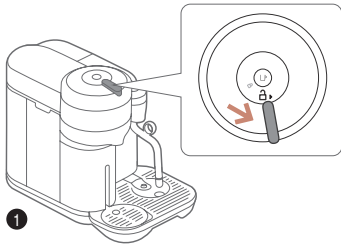
**WATER HARDNESS
°dH**

**WATER HARDNESS
CaCO₃**

1	0 to 5	0 to 3	0 to 50mg/l
2	> 5 to 13	> 3 to 7	>50 to 130mg/l
3	> 13 to 25	> 7 to 14	> 130 to 250mg/l
4	> 25 to 38	> 14 to 21	> 250 to 380mg/l
5	> 38 to 40fH	> 21 to 23	> 380mg/l to 400mg/l

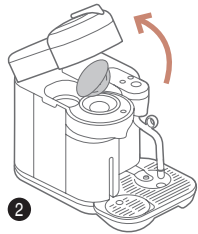
DESCALING

1

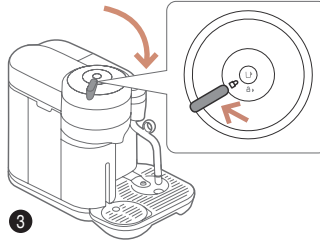


Open, close and turn the lever to the lock position.

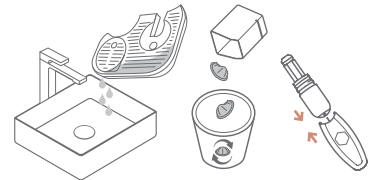
2



3

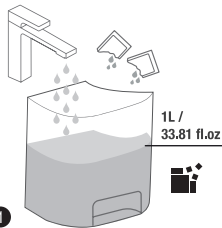


2



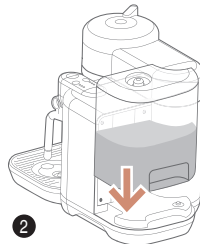
Empty the drip tray and the capsule container.
Clean steam tip holes.

3



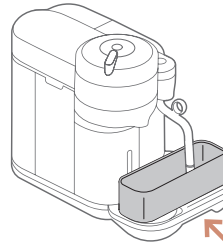
Fill the water tank with 2 units of Nespresso descaling liquid and fill the water tank to the descale line.

2



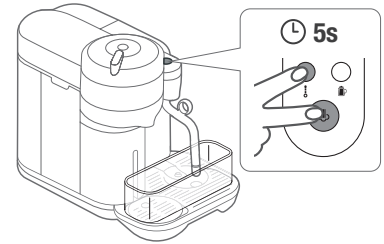
Replace back on to the machine.

4



Place at least a 50 fl.oz / 1.5L container under the coffee outlet.

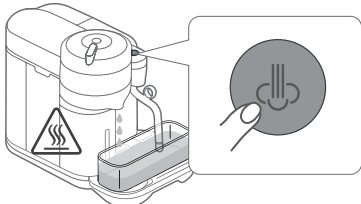
5



Press the Steam Button and Milk Temperature button for > 5 seconds.

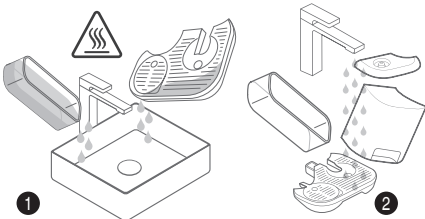
DESCALING

6



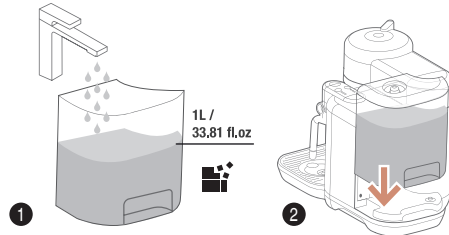
Press the steam button to begin the steam and coffee descale cycle.

7



Once the steam and coffee descale cycle is complete, remove, empty and rinse the water tank, container and drip tray.

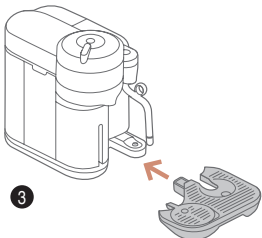
8



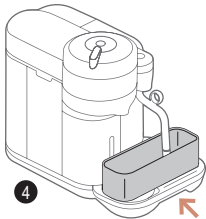
1 Refill the water tank to the descale symbol with fresh potable water. 1L / 33.81 fl.oz.

2 Reattach to the machine.

3

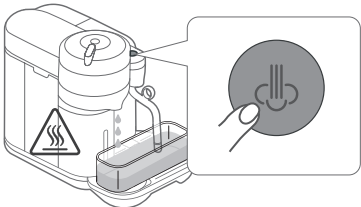


4



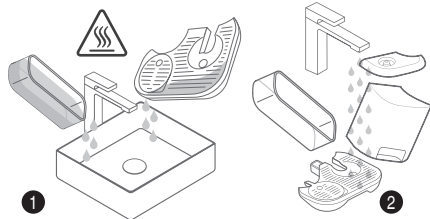
Replace the drip tray and container.

9



Press the Steam button to begin the rinse cycle.

10

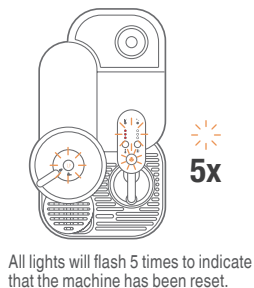
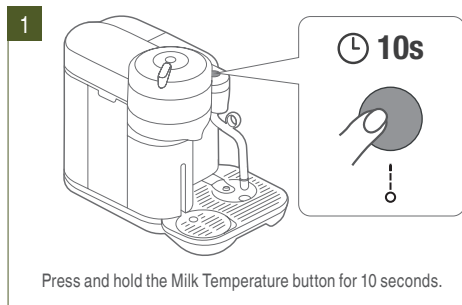


1 Once complete, remove, empty and rinse, the water tank, container and drip tray.

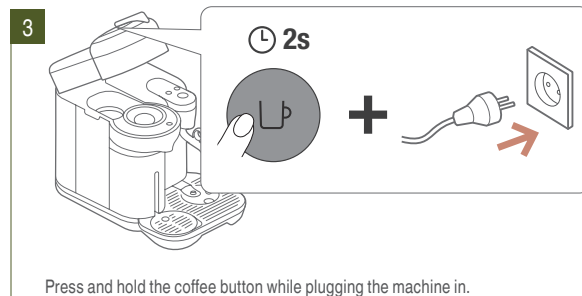
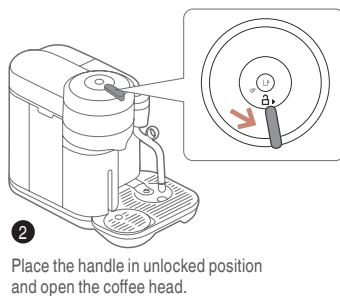
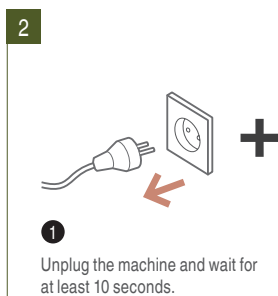
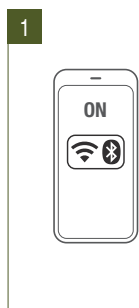
2

EN RESET TO FACTORY SETTINGS

THIS WILL RESET ALL REPROGRAMMED VOLUMES, WATER HARDNESS SETTING, MILK TEMPERATURE AND MILK TEXTURE SETTINGS.



TURN THE BLUETOOTH® / WI-FI® ON-OFF




i By default, the Bluetooth® / Wi-Fi® is switched on. Factory reset will also switch the Bluetooth®/ Wi-Fi® on.

EMPTYING THE SYSTEM

EMPTYING THE SYSTEM BEFORE A PERIOD OF NON-USE, FOR FROST PROTECTION OR BEFORE A REPAIR.


1



1

Empty the water tank.

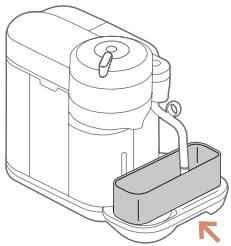
2



2

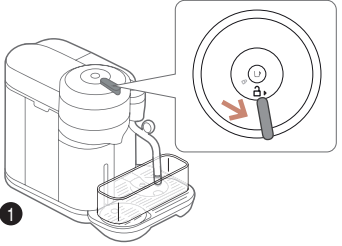
Replace back on to the machine.

2



Place a container under the coffee outlet.

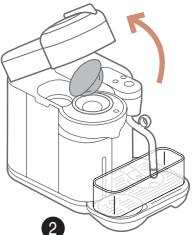
3



1

Unlock the coffee system.

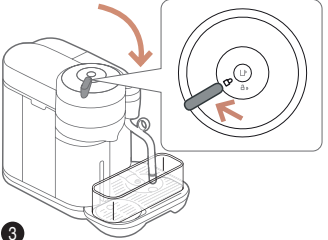
2



2

Open it and eject the coffee capsule.

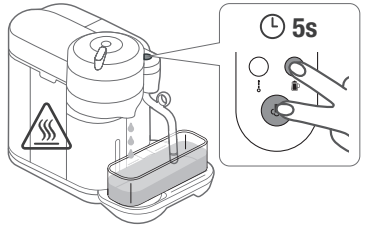
3



3

Then close and lock the coffee system.

4



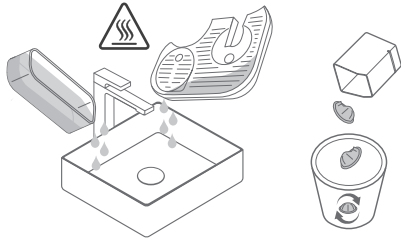
4

Press and hold the Steam button and Milk Texture button for 5 seconds.
The machine will be cleared of liquid.

EMPTYING THE SYSTEM

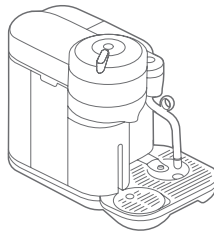
EMPTYING THE SYSTEM BEFORE A PERIOD OF NON-USE, FOR FROST PROTECTION OR BEFORE A REPAIR.

5



Empty container, the drip tray and capsule container.

6



The machine turns OFF automatically when machine is completely empty.

TROUBLESHOOTING

PROBLEM	POSSIBLE CAUSES	EASY SOLUTION
No light on buttons.	<ul style="list-style-type: none">The machine has turned "off" automatically.	<ul style="list-style-type: none">Push coffee or steam button to turn machine on.Check the mains, plug, voltage, and fuse.
No coffee.	<ul style="list-style-type: none">Check that the water tank is filled.Check that a fresh capsule is inserted in correct position, that the handle is properly locked and push the button to start.	<ul style="list-style-type: none">Descalce if necessary.Open the machine head and let the capsule be ejected. Then perform a cleaning as per cleaning section.
Coffee is not hot enough.	<ul style="list-style-type: none">Preheat cup with hot drinking water from the tap.	<ul style="list-style-type: none">Descalce if necessary.
The machine doesn't start and has Coffee Button light steady on.	<ul style="list-style-type: none">Check that Coffee Lever is properly locked.If brewing coffee, check that a fresh capsule is inserted in correct position, that the handle is properly locked and push the button to start.	<ul style="list-style-type: none">If you are cleaning, descaling or emptying the system, check that no capsule is inserted then close, lock the machine and push the button to start one of these operations.
The machine has stopped and the coffee or steam button blinks red continuously.	<ul style="list-style-type: none">Check that the water tank is filled.	<ul style="list-style-type: none">Fill the water tank and press the coffee or steam button to restart the process.Descalce if necessary.
Light blinks while machine is running.	<ul style="list-style-type: none">If coffee is flowing normally, this indicates the machine is working properly.If only water is flowing, the machine is executing a user request for either cleaning, descaling or emptying the system.	<ul style="list-style-type: none">If there is no intention to clean, descale, or empty the system, then push the button to stop the machine. If the machine is still blinking, exit descaling mode by holding the button for at least 7 seconds or refer to next section. If problem persists, call Nespresso.
Light blinks and machine is not running.	<ul style="list-style-type: none">It will take some time before the coffee flow comes out (due to barcode reading and prewetting the coffee).Check that a fresh capsule is inserted in correct position, that the handle is properly locked and push the button to start.Fill the water tank and push button to start.	<ul style="list-style-type: none">Turn the machine to "off mode" by pushing the coffee button for 3 seconds and then push it again to turn the machine "on". Now wait approximately 20 minutes to allow the machine to cool down after extensive use.If the machine doesn't turn "off" then exit descaling mode by pushing the button for at least 7 seconds.

TROUBLESHOOTING

PROBLEM

POSSIBLE CAUSES

EASY SOLUTION

Machine is not running and Coffee Button light continuously displays 2 blinks Red and 1 pause.

- During regular Coffee/Espresso preparation:
 - 1) Unlock the handle and open the machine head to check that a fresh undamaged capsule is inserted in the correct position.
 - 2) Check that the handle is in "locked" position.
 - 3) Check that the water tank is filled.
- During Descaling, Emptying and Cleaning:
 - 1) Check that capsule is ejected.
 - 2) Check that the handle is in "locked" position.
- During Programming Volume:
 - 1) Check if a capsule has been well inserted.
 - 2) Please refer to the corresponding chapter.

- If problem persists:
 1. Unlock the handle and open machine head.
 2. Replace capsule (if needed).
 3. Disconnect power cord from the outlet and plug the machine back into outlet after 10 seconds.
 4. Close the head and press the button to turn "on" and press again to start brewing. If problem persists, call **Nespresso**.

Leakage or unusual coffee flow.

- Check that the water tank is well positioned.

Machine enters standby.

- To save energy the machine will turn off after 2 minutes of non-use.
- See Energy Saving Concept Section.

Coffee grounds in the cup.

- Perform the cleaning procedure twice.
- See Cleaning the coffee system section.

Descal alert LED is blinking.

Descal alert LED is on and Steam does not work.

- Machine requires a descaling cycle be completed in order to achieve optimal performance.
- Descale the machine.

Milk steam cycle does not start








- Check if the water tank is correctly positioned.
- Check steam tip for any blockages and ensure wand is lowered.
- Check coffee brew in progress - steam can only start after coffee finished.
- Check descale alert is showing and requires a descale.
- Check clean led is showing and requires a steam wand clean.
- Fill water tank.
- Complete a steam wand cleaning cycle.
- Complete a descale cycle.














TROUBLESHOOTING

PROBLEM	POSSIBLE CAUSES	EASY SOLUTION
Quality of froth not up to standard	<ul style="list-style-type: none">• For optimal milk froth, use semi skimmed UHT or pasteurized milk at refrigerated temperature (about 4-6°C / 39-43°F).• Check the milk froth setting.	<ul style="list-style-type: none">• Use the milk jug provided and follow the levels marked.• Clean both the milk jug and steam wand after each use.• Clean the steam wand.• Ensure milk jug is correctly positioned on milk jug recess.
Steam is very wet		<ul style="list-style-type: none">• Use cold, potable water. Do not use highly filtered, demineralised or distilled water.
Milk overflows	<ul style="list-style-type: none">• Fill jug with appropriate milk volume.	<ul style="list-style-type: none">• To stop overflow, either reduce the initial volume of milk and/or reduce the froth level. This varies depending on milk type.
Milk temperature is too hot	<ul style="list-style-type: none">• Use the milk jug provided.• Check the milk jug is positioned correctly, in the recess and on the milk jug temperature sensor.• Check the temperature sensor in the drip tray is clean.	<ul style="list-style-type: none">• Decrease the milk temperature setting.
Milk temperature is not hot enough	<ul style="list-style-type: none">• Preheat cup.• Use the milk jug provided.• Check the milk jug is positioned in the recess and on the milk jug temperature sensor.	<ul style="list-style-type: none">• Increase the milk temperature setting.• Check the steam tip for blockages.
Clean Steam Wand alert LED is on	<ul style="list-style-type: none">• Steam wand requires cleaning be completed in order to achieve optimal milk frothing performance.	<ul style="list-style-type: none">• Follow the steps to clean the steam wand.

EN **ERRORS / BLINKING SUMMARY**

DRAFT

DESCRIPTION	INDICATION (TROUBLESHOOTING)	0	1"	2"
No light on button	Machine OFF			
Steady white illuminated button	Ready mode			
White regular blinking: once/second	Coffee preparation		 ...	
Orange light blinking quickly: twice/second	Coffee Cleaning Mode		  ...	
Orange light steady on	Descale			
Orange light blinking rapidly: three times/second	Empty	     ...		
White light pulsing up: lighting up to steady ON, then OFF	Heating up		 	 ...
Orange light pulsing down: fading to OFF, then ON	Cooling down after overheating		  	 ...
Red light blinking rapidly twice, then long OFF	Error		  	

DESCRIPTION	INDICATION (TROUBLESHOOTING)	0	1"	2"	...	10"
Orange light blinking 5 times in 10 seconds	Machine OFF				...	10"
Orange and white light alternately blinking 3 times and then steady on	Ready mode		 	 	 	...
White light blinking twice/second	Coffee preparation		 			

ENERGY SAVING CONCEPT

The machine can be turned "off" at any time (when not operating) by removing the plug from the power outlet.

Automatic "off" Mode: the machine will turn off automatically after 2 minutes of non-use.

NOTE: In special cases, the machine can take up to 5 minutes to automatically turn off.

CONTACT NESPRESSO

Should you need any additional information, in case of problems or simply to seek advice, call Nespresso.

Contact details for your nearest Nespresso can be found in the welcome material in your machine box or at [nespresso.com](https://www.nespresso.com)

DISPOSAL AND ENVIRONMENTAL PROTECTION

Your appliance contains valuable materials that can be recovered or can be recycled. Separation of the remaining waste materials into different types facilitates the recycling of valuable raw materials.

Leave the appliance at a collection point. You can obtain information on disposal from your local authorities.

To know more about Nespresso sustainability strategy, go to www.nespresso.com/positive



NESPRESSO® **Breville**®

BVE850 USCM IB 120V A22