

magimix®

NESPRESSO®

ESSENZA AUTOMATIC



Instruction Manual



Please read this Instruction Manual and the safety instructions before operating the appliance!



## Safety precautions

Keep this instruction manual

This appliance may become a safety hazard if these instructions and safety precautions are ignored.

### Emergency:

Immediately remove plug from power socket.

This product has been designed for domestic use only. Any commercial use, inappropriate use or failure to comply with the instructions, the manufacturer accepts no responsibility and the guarantee will not apply.

The appliance is intended to prepare beverages according to these instructions.

This appliance is intended to be used in household and similar applications such as: staff kitchen areas in shops, offices and other working environments; farm houses; by clients in hotels, motels and other residential type environments; bed and breakfast type environments.

Do not use the appliance for other than intended use.

Remove plug from socket if not in use for long periods – holiday etc.

Check that the voltage quoted on the rating plate is the same as your voltage.

Connect the appliance only to power sockets with protective earth. The use of incorrect connection voids warranty.

Place on a flat, stable heatresistant work surface away from water splashes and any heat sources.

This machine operates with the *Nespresso* capsules only, available exclusively from the *Nespresso* Club.

Do not use the machine if it is not operating normally or if there is evidence of damage. In such cases inform *Nespresso* Club.

Always close lever, never lift during operation.

Do not put fingers into capsule compartment and capsule shaft, danger of injury.

Do not use appliance without drip tray and drip grid.

Keep appliance/cord out of reach of children.

Do not put fingers under coffee outlet, risk of burnt hands.

Do not place power cord near hot surfaces or sharp edges, etc. Never touch cable with wet hands. Do not unplug by pulling the cord. In case of damage, do not use the appliance. In order to avoid danger have repairs and replacement of power cord only by *Nespresso* Club.

Do not dismantle the appliance and do not insert anything into the openings. All service other than normal use, cleaning and care must be performed by the *Nespresso* Club or an authorised service centre.

This appliance is not intended for use by persons (including children) with reduced physical, sensory or mental capabilities or lack of experience and knowledge unless they have been given initial supervision or instruction concerning the use of the appliance by a person responsible for their safety. Children should be supervised to ensure that they do not play with the appliance.

Before cleaning/care unplug the appliance and let it cool down. Never clean wet or immerse plug, cord or appliance in any fluid.

Descaling: 7c) Do not lift lever during descaling process. 7d) Rinse the water tank and clean the machine to avoid any residual descaling agent.

Packaging is made of recyclable materials.

Protect the environment first!

Your appliance contains valuable materials which can be recovered or recycled. Leave it at a collection point.





### FOR UK AND REPUBLIC OF IRELAND ONLY

**WARNING:** Always replace the fuse cover of the fitted plug, never use the plug with the fuse cover omitted. If a replacement fuse cover is required, ensure it is the same as the one visible on the pin face of the plug (i.e. RED or ORANGE).

Fuse covers are available from: BBS Ltd  
Po Box 110  
Farnham Surrey GU104XL  
Phone: 01252 727755



Use a 13 A fuse approved by ASTA to BS1362, marked thus

**WARNING:** a plug with a bared flexible cord is hazardous if engaged in a live socket. If the fitted plug has been cut from the power supply cord, it should be destroyed and replaced with a three pin plug in accordance with the following code:

**BLUE: neutral**  
**BROWN: live**  
**GREEN/YELLOW: earth**

The wire which is coloured BLUE must be connected to the terminal in the plug which is marked with the letter "N" or coloured BLUE or BLACK.

The wire which is coloured BROWN must be connected to the terminal in the plug which is marked with the letter "L" or coloured BROWN or RED which is connected to the fuse.

The wire which is coloured GREEN/YELLOW should be connected to the terminal marked with the letter "E", or by the earth symbol or coloured GREEN or GREEN/YELLOW.



earth symbol



## Power save mode settings



Switch ON



3 s

Press Espresso button for 3 s while heating up.



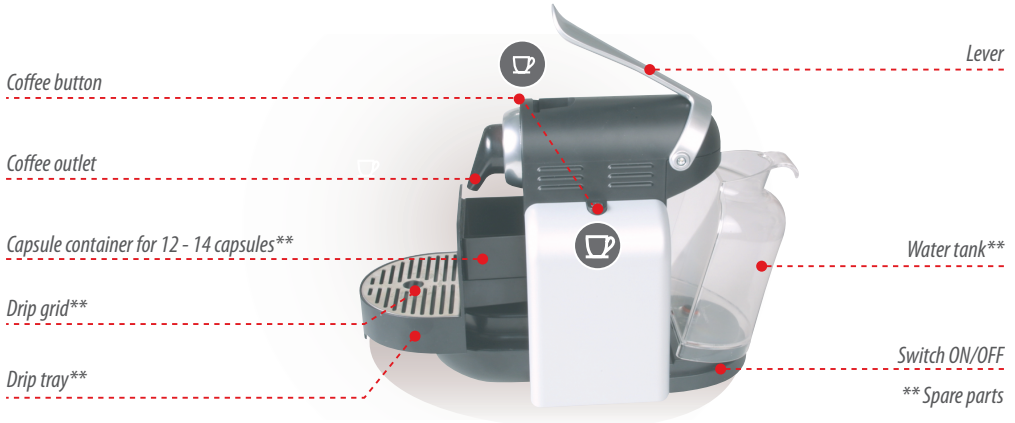
Espresso button blinks to indicate setting mode.



To change the settings, press Espresso button:  
1x blinking: Power save mode after 30 min (initial setting)  
2x blinking: Power save mode after 60 min  
3x blinking: Power save mode OFF

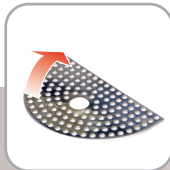


In power save mode, buttons fade in/out every 5 s. To reactivate, press any button. Press again to preselect coffee.



# 1

## First use or after a longer period of non-use



Remove plastic film



Fill water tank with potable water



Place a container



Plug into mains + switch ON



Heating up



Ready



Rinse: let water run through 6x

No water



see: **8b**

# 2

## Daily: before the 1st coffee



Fill water tank with potable water



Switch ON



Heating up



Ready

While heating up you can pre-select your coffee (see 3). Once the machine is ready coffee will begin to flow automatically



# 3



## Espresso

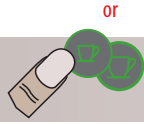


## Lungo

### Preparation



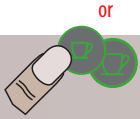
Preheat cup: 1 cup of water



or



Insert capsule



or



Flow speed depends on coffee variety



Eject capsule (drops into capsule container)

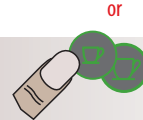
### Programming the fill up level



Insert capsule



Press and hold button for at least 3 seconds, release at desired level



### Resetting the programmed large and small coffee flows to factory settings



Switch OFF



Press and hold big cup button



Switch ON

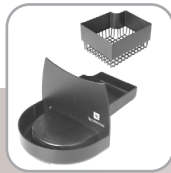


# 4

## Daily: After the last coffee



Switch off



Empty capsule container + drip tray



Rinse and empty water tank

# 5

## Clean: When necessary



~~abrasive~~

~~solvent container~~

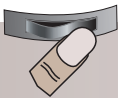
~~dishwasher~~



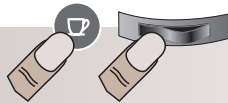
Damp cloth, mild cleaning agent

# 6

## Empty system: Before long period of non-use, for frost protection and after repair



Switch off and remove water tank



Press small cup button & switch on simultaneously



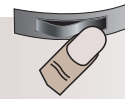
Buttons blink alternatively



1. Open  
2. push and hold for 3 secs.



Close



Switch off  
(machine blocks for 10 min and is ready to be transported)

# 7 Descaling



Carefully read safety instructions on decalcifier package.  
 Decalcifier is aggressive to surface of casing.  
 Vinegar: Danger of damage

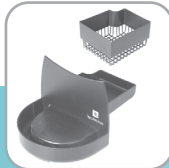
Water hardness      Descal after

fH	dH	↑	300 600 1200	
36	20			
18	10			
0	0			

## Preparation



Remove capsule



Empty capsule container + drip tray



Rinse machine, see 1



If leakage see:

**8d**



Fill with *Nespresso* descaler and 0.5 l water



Place a recipient



## Descaling

Avoid using vinegar as it can damage your machine.



Press both buttons simultaneously for 3 seconds



**Start**

90 sec

**Stop**

Let descaling solution run through twice



Refill water tank once more with descaling solution and repeat step

## Rinse



Empty, rinse and fill water tank with potable water



Rinse machine, see 1



Exit: press both buttons simultaneously for 3 secs



# 8 Troubleshooting

a



No light indicator



Check mains: plug, voltage, fuse. In case of problems call *Nespresso Club*

b

No coffee, no water

- Water tank empty → fill water tank with potable water

- Fill up the water pump



1. Open + 2. Hold 3 seconds



Close

- Descale, if necessary → point 7

c

Coffee not hot enough



Preheat cup, descale if necessary

d

Capsule area leaking (water in capsule container)



Position capsule correctly. If leaking: call *Nespresso Club*

e



Irregular interval blinking



Send machine to repair or call *Nespresso Club*

f

No coffee, just water runs out (despite inserted capsule)

In case of problems, call the *Nespresso Club*



## Specifications



..... 220 - 240 V, 50 Hz, max- 1260 W



..... max. 19 bar



..... ~ 3 kg



..... 1 l



..... 5°C ... 45°C



..... 16.6 cm 25.2 cm 29.1 cm



## Optional Accessory



*Nespresso descaling kit*