



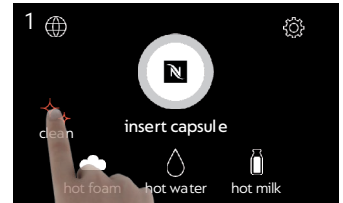
HOW TO CLEAN YOUR NESPRESSO MOMENTO COFFEE & MILK MACHINE

STEP 1

When your machine requires cleaning, a “clean” symbol will appear in **red** on the touch screen display. Press the symbol and enter the code to begin the cleaning process.

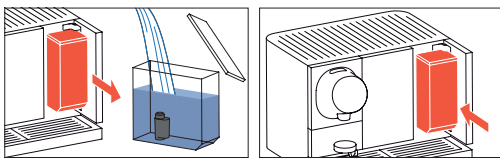
OR

To start the cleaning process manually, enter the maintenance menu through settings and select ‘clean the milk machine’.



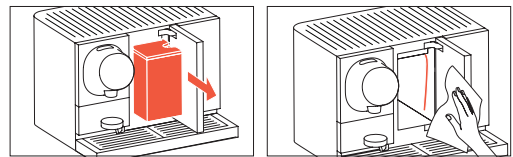
STEP 2

Fill the water tank with water.



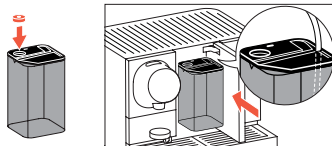
STEP 3

Remove milk tank from the milk fridge and clean it. Wipe the suction tube and fridge walls dry.



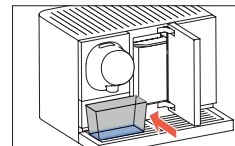
STEP 4

Place the cleaning tablet in the dedicated slot on the cleaning tank and press gently until it's well secured. Place cleaning tank inside the milk fridge in the machine.



STEP 5

Place waste water container underneath coffee head and leave the milk fridge door open throughout the cleaning process.



STEP 6

Follow the cleaning instructions shown on the machine's touch screen interface to start the cleaning process.

STEP 7

Once complete, return to the main menu on the touch screen display. Remove the cleaning tank and lid and clean thoroughly with warm soapy water. Close the milk fridge door.

If you require assistance, please watch the Machine Assistance videos on www.nespresso.com/pro, or complete the contact us form on www.nespresso.com/pro and a Nespresso representative will be in touch.

Please refer to the user manual for safety precautions for cleaning the machine.
The user manual can be found on the Machine Assistance page on www.nespresso.com/pro